

# IMAGINE SOUTH LAKE CHARTER

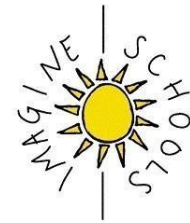
*We Promote Excellence...*

2750 Hartwood Marsh Road

Clermont, Florida 34711

(352) 243-2960

[Imaginesouthlake.org](http://Imaginesouthlake.org)



Developing Character,  
Enriching Minds.

It is the priority of Imagine South Lake Charter School to implement health and safety protocols to maintain in-person learning for all students.

To protect the safety and health of all students and staff, school officials may send home or deny entry to any student, staff member, or visitor with any symptoms of illness.

## **Transportation**

- Bus drivers are encouraged to wear a face covering or face shield.
- Students are encouraged to wear a face covering on the bus.
- Each bus will be thoroughly disinfected daily.
- Bus windows will be cracked to allow for greater ventilation.
- Hospital grade sanitizing will be performed weekly.
- Bus drivers will maintain a current seating chart for all routes to assist with contact tracing.

## **Arrival**

- Students who are sick are required to stay home.
- Temperature checks will be done upon arrival to campus.
- Upon arrival, students will report directly to their homeroom.
- Supervision will be increased to maintain directional flow, reduce mass gatherings, and support social distancing.
- Breakfast will be provided using social distancing protocols.
- Extended Care program will continue to follow the approved safety protocols.

## **Classroom**

- Safe social distancing of three feet will be encouraged in classrooms when possible.
- It is recommended that students wear a face covering.
- Hand sanitizer, disinfecting wipes (when available), soap and water will be readily available to employees, students and visitors.
- Cleaning protocols will be increased, including replacing air filters as required by the manufacturer unless circumstances dictate replacing them sooner. This also includes cleaning cooling coils (evaporator coils) with disinfectant as per manufacturer recommendations.
- Equipment and instruments will be washed or wiped down after each use.
- Disinfectant, antimicrobial, and germicidal fogging of all high touch surfaces will be conducted daily in classrooms. Custodians are provided individual bottles of disinfecting spray for the retreatment of surfaces as needed.

# IMAGINE SOUTH LAKE CHARTER

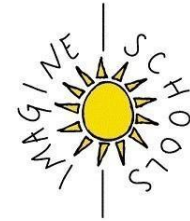
*We Promote Excellence...*

2750 Hartwood Marsh Road

Clermont, Florida 34711

(352) 243-2960

Imaginesouthlake.org



Developing Character,  
Enriching Minds.

- 
- Water fountains will be closed, and water refill stations will be used. Parents are encouraged to include a water bottle for daily use.
  - Students will be reminded frequently by school personnel about the importance of good hygiene.

At the elementary school level, students will spend time on campus with the same group of students as much as possible, including in the classroom, the cafeteria, media center, and the playground. Interaction with students from other classes will be limited but necessary during intervention time.

## **Lunch**

- Students will sit with their classroom cohort to the greatest degree possible.
- Hand sanitizer will be available.

## **Dismissal**

- Dismissal will be staggered when possible to reduce mass gatherings.
- Supervision will be increased to maintain directional flow and reduce mass gatherings.
- Extended Day program will follow current safety protocols.

## **Additional Safety Protocols**

- Parents and visitors will have limited access to the school campus including parents walking students to their child's classroom, having lunch with their child(ren), volunteering and mentoring.
- When volunteers are on campus, it is recommended they wear a face covering.
- Temperatures will be checked prior to all individuals visiting the school campus.
- Schools will schedule meetings, clubs and parent events virtually when feasible.
- Parents of medically vulnerable students should consult with their healthcare provider before returning to school or work.
- Temporary employees providing substitute coverage will be trained on safety protocols before working in a school or on a bus.

## **Sanitation and Cleaning Protocols**

- Nurses will work with school administrators to ensure that there is an adequate amount of clinic supplies and personal protective equipment (PPE), including face coverings, gowns, gloves, eye protection, disinfectant cleaners, touchless thermometers, and hand sanitizer.

# IMAGINE SOUTH LAKE CHARTER

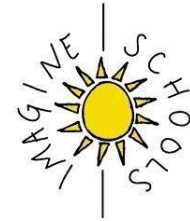
*We Promote Excellence...*

2750 Hartwood Marsh Road

Clermont, Florida 34711

(352) 243-2960

Imaginesouthlake.org



Developing Character,  
Enriching Minds.

- 
- Disinfectant and germicidal fogging of all high touch surfaces will be conducted daily. Custodians are provided individual bottles of disinfectant spray for the retreatment of surfaces when needed.
  - Prior to school occupancy, all spaces (including permanent and portable spaces) will be cleaned and sanitized. Frequently touched surfaces would include door handles, sink handles, drinking fountains, desktops, reception countertops and other surfaces as needed throughout the day. Filters will be replaced in Mechanical HVAC systems with the most efficient that can be supported by its design.
  - During school occupancy, cleaning and disinfection procedures will be conducted in accordance with CDC Guidelines. As an added precaution, frequently touched surfaces will be cleaned periodically throughout the day utilizing disinfectants listed for use on COVID-19.
  - Face coverings will be provided as requested.

## **Student Becomes Sick on Campus**

- A student who becomes ill and has verbalized to the teacher or exhibits any COVID-19 symptoms will be removed from the classroom. The Student will be sent to a supervised, isolated area with documentation from the teacher of the symptoms.
- Parents/guardians will be contacted for immediate pick-up.
- Parents/guardians will be provided information on COVID-19 testing and next steps.
- The school nurse or school administrator will report confirmed cases to the District and report the information to the Department of Health and assist the school with the required contact tracing.

## **Students Without Symptoms**

- A student who needs medical attention for reasons outside of COVID-19 symptoms will be sent up to the newly designated first aid area with documentation from the teacher of the nature of the need.
- The nurse will evaluate the need (i.e., bandaid, approved medication, ice for an injury, etc.), treat the condition, and return the student to class.
- Parents/guardians will be contacted for immediate pick-up if considered necessary by the school nurse.

## **Communication when Staff/Student Tests Positive for COVID-19**

- All FERPA and HIPAA privacy requirements will be followed. When a confirmed case is reported, the school will conduct required contact tracing. The school will notify those identified

# IMAGINE SOUTH LAKE CHARTER

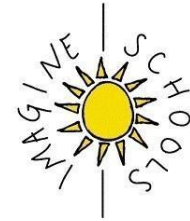
*We Promote Excellence...*

2750 Hartwood Marsh Road

Clermont, Florida 34711

(352) 243-2960

[Imaginesouthlake.org](http://Imaginesouthlake.org)



Developing Character,  
Enriching Minds.

---

as having contact with an infected individual. For each confirmed case, the school principal or his/her designee, will notify all faculty and staff of a positive case on their school campus. The school administrator and/or nurse or other trained personnel will be available to share pertinent information with the families of students who are directly impacted in accordance with guidance from the local Department of Health. To ensure the highest level of communication and transparency, all parents will be informed via Jupiter Grades of any positive case that is reported on their child's school campus.

- The school is in constant contact with the local Department of Health, and we follow their guidelines for notification and contact tracing.
- CDC guidelines along with guidance from the DOH, will define when and how classrooms, a school or schools will be closed in the event of school or community spread.
- Imagine South Lake will follow COVID-19 guidelines for quarantining students and staff as recommended by the Lake County Department of Health and the Florida Department of Education Decision Tree as adopted and implemented by the Lake County School District.

**All teachers will maintain a current seating chart for all classes to assist with contact tracing.**

**These protocols will be updated as needed.**

# IMAGINE SOUTH LAKE CHARTER

*We Promote Excellence...*

2750 Hartwood Marsh Road

Clermont, Florida 34711

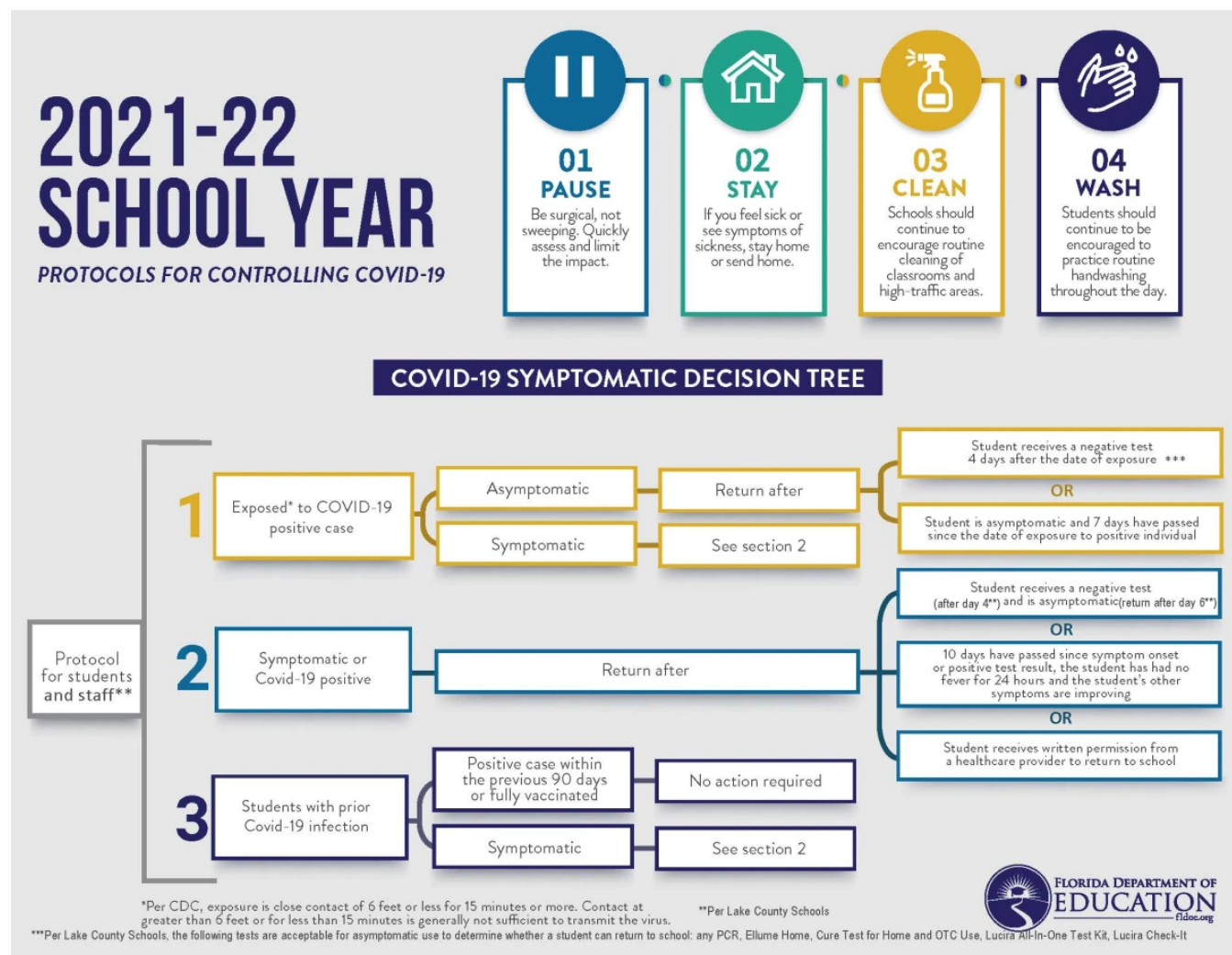
(352) 243-2960

Imaginesouthlake.org



Developing Character,  
Enriching Minds.

## Returning to School



Asymptomatic students who are exposed to a COVID-19 positive case -- with exposure being defined by the CDC as close contact of 6 feet or less for 15 minutes or more -- may return to school after meeting the following criteria:

- Student receives a negative test at least 4 days after the date of exposure, **or**
- Student is asymptomatic and 7 days have passed since the date of exposure to the positive individual.

# IMAGINE SOUTH LAKE CHARTER

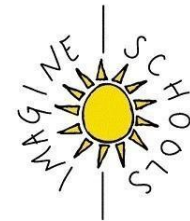
*We Promote Excellence...*

2750 Hartwood Marsh Road

Clermont, Florida 34711

(352) 243-2960

[Imaginesouthlake.org](http://Imaginesouthlake.org)



Developing Character,  
Enriching Minds.

---

Students who are symptomatic or COVID-19 positive may return to school after meeting the following criteria:

- Student receives a negative test and is asymptomatic, **or**
- 10 days have passed since symptom onset or positive test result, the student has had no fever for 24 hours and the student's other symptoms are improving, **or**
- Student receives written permission from a healthcare provider to return to school.

Asymptomatic students/staff with a prior COVID-19 infection who are exposed to a positive case within 90 days of being diagnosed are not required to quarantine.

Asymptomatic students and staff who are fully vaccinated do not have to quarantine.

## **Exceptional Student Education**

Students in self-contained ESE programs are strongly encouraged to attend full-time instruction at their 2021-2022 enrolled school. Remote learning and other reasonable accommodations will be determined on a case-by-case basis according to students' individual needs.

## **Other Measures to prevent the Spread in Schools**

In addition to making every effort to make safe social distancing (3 feet) possible in classrooms, other important safety measures include frequent hand washing and hand sanitizing products in classrooms. Personal protective equipment will be provided to employees as requested to include gloves, face coverings and gowns.

***Safety protocols are subject to change based on updated or new recommendations from the local Department of Health or Governor's Executive Orders.***